

EMERGENCY CALL VOLUME

With the population growth and development of the Fire District our volume of emergency calls continues to increase. About 65% of the calls are from emergency medical services, the remaining 35% are fire incidents. We respond to an average of 1.5 calls each day.

YEAR	EMERGENCY CALLS
2014	843
2015	966
2016	968
2017	976
2018	1053

FUNDING & REVENUE

The Fire District is funded as all other State Fire Districts, through an assessment of the value of each property owners home or business located in the Fire District boundaries. The assessment is regulated by state law.

The Fire District's ambulance service is paid for by a voted 5 year E.M.S. levy at the rate of \$.50 per \$1,000 of assessed property evaluation. A small amount of revenue is generated through billings and contracts.

VOLUNTEERS NEEDED

We have a need for dedicated Volunteer Firefighters to help our department serve the needs of our community. If you would like to be a member of our family please contact the Fire District.



VOLUNTEER FIREFIGHTER REQUIREMENTS

- ✓ Must live within the Fire District boundaries.
- ✓ Minimum of 18 years of age.
- ✓ Successfully pass an interview process.
- ✓ Pass a criminal background and drivers check.
- ✓ Pass the physical agility test.
- ✓ Possess a valid driver's license.
- ✓ Possess a high school diploma or GED.
- ✓ Successfully pass a 144 hour structural fire fighting academy course.
- ✓ Successfully pass a 36 hour wildland fire fighting course.
- ✓ Successfully pass a 140 hour Emergency Medical Technician course.
- ✓ Attend 60% of training meetings.
- ✓ Respond to a minimum of 25% of emergency incidents.
- ✓ Provide yourself with reliable transportation.
- ✓ Be a team member with a positive attitude.
- ✓ Successfully pass a one year evaluated probation period.

All required training is paid for by the Fire District.

FOR APPLICATION INFORMATION

STATION 210
1304 Dale Avenue
Benton City, WA 99320

(509) 588-3212 (phone)
(509) 588-4343 (fax)

www.BCFPD2.org

VOLUNTEER FIREFIGHTER RECRUITMENT



It's all about Community!

MISSION & FUTURE VISION

Our mission is to save lives, protect and promote shared responsibility for community safety. We serve the community by quickly responding to fire and medical emergencies, major disasters and rescue situations. We also provide programs aimed to our children and adults in preventing fire hazards, home escape plans and preparing for emergencies.

We value our close ties to the community and believe the best way to provide emergency services is through dedicated volunteers and career firefighters. As we carry out our mission we strive through innovative training, competent and caring volunteers.

Our future vision is to continue to provide quick response times with highly trained firefighters, emergency medical technicians and paramedics. By providing a highly professional service with prudent spending of public funds. Becoming self-sufficient in capital outlay purchases, and meticulous planning and budgeting.

EMERGENCY COMMUNICATIONS

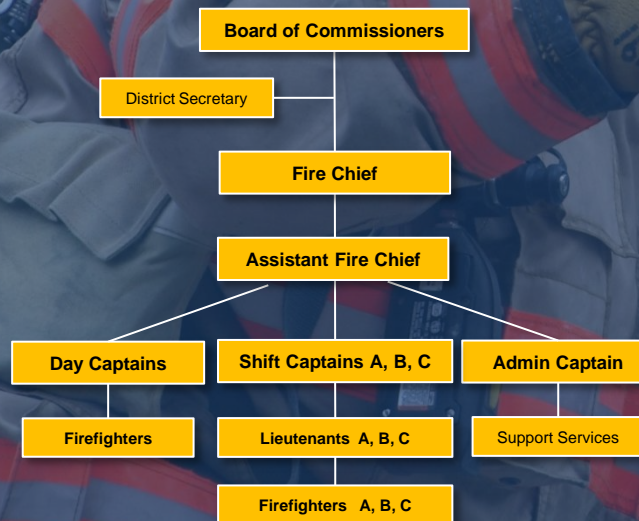
The Fire District is dispatched for emergency calls by a centralized 911 dispatch service called South East Communications Center.

SECOMM has an enhanced 911 service and a Computer Aided Dispatch (CAD).

ORGANIZATIONAL STRUCTURE

The organizational structure of the Fire District has shared responsibilities. The Fire District is directed and controlled by the Board of Fire Commissioners, which are three elected officials from our community. The Board of Fire Commissioners is responsible for the policy direction of the fire department. Commissioners are elected by the public vote to a six year term.

The organization leadership responsibilities are shared by a Fire Chief, Assistant Fire Chief and Shift Captains. The Day Captains handle administrative duties, policy affairs, legal compliances, resource management and daily emergency operations. The Fire District is operated by volunteer fire fighters and a team of officers.



SERVICE AREA

The Fire District serves the City of Benton City and the rural areas surrounding Benton City. Our Fire District has a population of approximately 10,000 residents, including commercial and residential buildings, apartments, schools, orchards, vineyards and agriculture.

Our Fire District covers a fire response area of 88 square miles and an ambulance coverage area of 141 square miles.

The Fire District has two fire stations. The headquarters fire station is located in the City of Benton City on Dale Avenue and the sub fire station is located on the corner of Whitmore Road and Corral Creek outside the city limits.

The locations of the stations were specifically chosen to assure timely responses to all areas of the Fire District.

The Fire Districts Insurance Rating (ISO)

City of Benton Rated 3
County of Benton Rated 5